



# Window Series

## The Portal To The World

Welcome to the future of visual technology with the Window Series LED video wall display. It's your portal to the world, allowing you to visually transport yourself anywhere you want with it's unmatched precision, clarity and color consistency. The Window combines the latest in display advancements delivering best-in-class performance by leveraging cutting-edge Micro Flip Chip COB technology.



PENSAR LED  
*Think Fine Pitch*

**website:** [www.pensarled.com](http://www.pensarled.com) **email:** [info@pensarled.com](mailto:info@pensarled.com) **phone:** 833-975-4031

# KEY FEATURES

## **Smoother Visual Experience**

A viewing experience like no other with smoother transitions and a seamless display. Whether you're watching a movie, sports event, video gaming or displaying extremely dynamic content, it performs flawlessly.

## **Wider Viewing Angles**

With its innovative design, it offers wider viewing angles, ensuring that every seat in the room gets a perfect view. This feature makes it ideal for spaces and gatherings where everyone needs to see the screen clearly.

## **Improved Heat Dissipation**

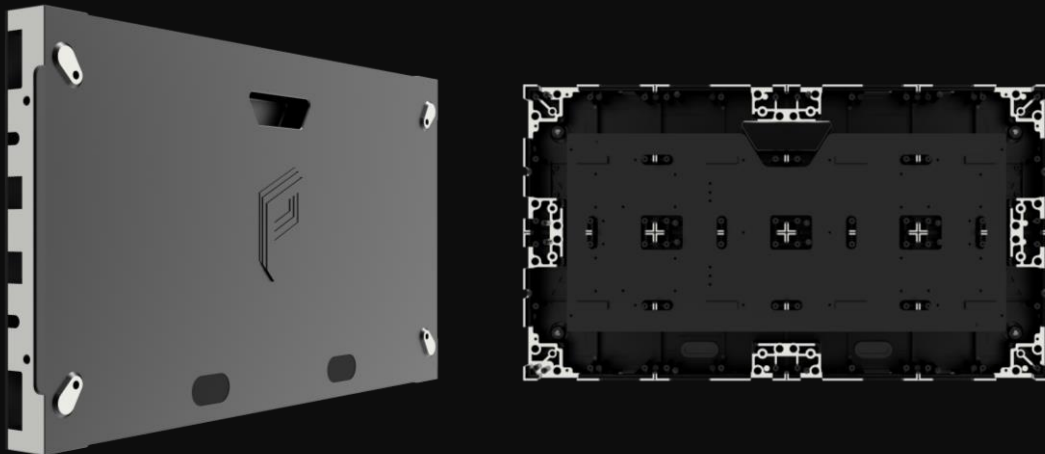
Our advanced heat dissipation technology ensures that the video wall remains cool and operates efficiently. This also helps to extend the lifespan, quality and performance of the product over time.

## **Better Color Consistency**

Experience vibrant, true-to-life colors with better color consistency across the entire video wall display. Higher pixel density ensures sharp, clear images with excellent uniformity, making every detail come to life.



# PRODUCT BENEFITS



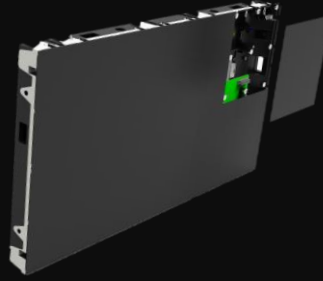
The Window Series surpasses color expectations by delivering high grayscale performance and achieving a DCI-P3 color gamut. The advanced features of the Window Series enhance your viewing experience, leveraging the cutting-edge Micro Flip Chip COB technology.

This positions the Window Series as a leader in the rapidly advancing display technology sector, offering significant benefits. Ideal for studios, theater rooms, control rooms, and high-end digital signage, the Window Series sets a new standard for visual excellence.

- 27" cabinets hit the golden ratios perfectly
- XM technology breaking the barrier of gray scale
- Clear viewing in any light levels
- Wide viewing angles
- High-impact modules with non-reflective surface
- Encapsulated pixels that are water and dust-resistant
- Intense blacks give the panels extreme high-contrast
- True life imagery
- Long life span extended over 10 years
- Low power consumption
- Low heat at any brightness



**PENSAR LED**  
*Think Fine Pitch*



# Window Series

## Flip Chip COB (Micro)

| Immersive              | 0.6           | 0.7     | 0.9     | 1.2     | 1.5     |
|------------------------|---------------|---------|---------|---------|---------|
| Pixel Pitch (mm)       | 0.625         | 0.78    | 0.93    | 1.25    | 1.56    |
| Led Type               | Flip Chip COB |         |         |         |         |
| Size Cabinet (mm)      | 600x337.5x58  |         |         |         |         |
| Size Cabinet (inch)    | 23.6x13.3x2.3 |         |         |         |         |
| Pixel Cabinet (dots)   | 960x540       | 768x432 | 640x360 | 480x270 | 384x216 |
| Weight (Lbs.)          | 11.5          |         |         |         |         |
| Brightness (nits)      | 1000-1200     |         |         |         |         |
| Gray Scale (bit)       | 16            |         |         |         |         |
| Scan Rate              | 1/30          | 1/32    | 1/36    | 1/30    | 1/32    |
| Color                  | DCI-P3        |         |         |         |         |
| IC                     | XM11202G      |         |         |         |         |
| Refresh Rate (Hz)      | 7680          |         |         |         |         |
| Viewing angle          | 160Hx160V     |         |         |         |         |
| Card                   | A10S-Plus     |         |         |         |         |
| Contrast               | 20,000:1      |         |         |         |         |
| AC Voltage             | 100/240       |         |         |         |         |
| Power Max./ Avg.(watt) | 92/45         | 87/40   | 81/37   | 77/35   | 71/32   |
| BTU/H Max./ Avg.       | 346/138       | 314/135 | 311/124 | 276/111 | 276/111 |
| Maintenance            | Front         |         |         |         |         |
| Installation           | Wall/floor    |         |         |         |         |

*Remark: Power consumption tolerance:  $\pm 15\%$ , according to the actual situation.  
Pensar LED LLC, reserves the right to modify specifications and parameters without further notice.*

